



RICE GROWING OUTLOOK REPORT

June 2024





Rice Growing Outlook Report

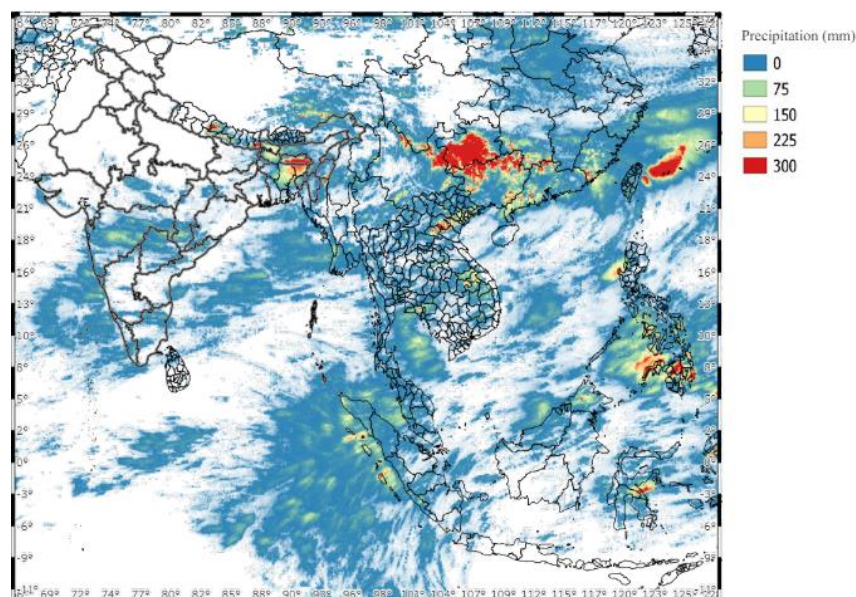
June, 2024

Overview

In the Northern side of SE-Asia, the cultivation of wet season rice starts in all countries and regions and the growing stage is in seeding to young panicle forming stage. This year, the start of the rainy season is late, and the planting work is likely to be delayed due to lack of irrigation water. But it seems not a big issue for the planting work. Total planted area also is forecasted to decrease than last year by farmers change cultivation crop to other crops. On the other hand, the growing condition of early-stage rice is generally good.

In the Southern side of SE-Asia (Indonesia), the harvesting of wet season rice is expected to be completed this month. Although the harvested area decreased, the yield was good due to enough water and sunlight during the growing period and total production was generally same as the previous year. On the other hand, the dry season rice planting is progressing and the growing conditions are good due to enough water from high-intensity rainfall.

Precipitation condition in early of June



This map is provided by Indian Space Research Organisation (ISRO) under the APRSAF/SAFE agromet project

<https://www.eorc.jaxa.jp/SAFE/project/agromet>

Brunei

About 95% of the irrigated area has been planted for the dry season rice and about 40% of the area is in the reproductive and ripening stages. The current rice growing conditions is expected to be slightly poor with heavier than normal rainfall patterns expected in the coming months, during harvesting. Combined this with high humidity, there is a high potential of disease incidences in the rice fields which farmers have been alerted to.

Cambodia

In June, the wet season rice planted area reached 40% of the national plan, but the planting condition is delay due to less and late rain compared to last season. The main growing condition is in seedling to tilling stage. The weather condition is favorable due to enough sunshine.

Indonesia

The wet season rice harvest is expected to be completed this month, with the total harvested being 5.5 million ha and 9.9% lower than the last wet season. The yield is good under enough water and sunlight during the growing period. However, total production is expected to increase by approximately 0.03% compared to last season.

This June is the third month of the dry season rice planting, and the total planted area reached 2.7 million ha, 2.5% higher than last year. Growing conditions are favorable due to intensive rainfall, especially in the southern region. Although high-intensity rainfall was recorded in some areas, no significant damage was reported. Conversely, in other areas, rainfall has started to decrease as the dry season approaches. However, the reduced rainfall did not cause any damage to the rice crop.



JASMAI West Java solar radiation map: Yield is good under enough water and sunlight during the growing period

Laos

The wet season rice is in the land preparation and seeding stage. The national planting plan of lowland rice in this year is approximately 765 thousand hectares with a slight increase from the previous year, and the production is expected over 3 million tons. The planting work completed approximately 100 thousand hectares so far. The weather condition and irrigation water supply are good for the paddy growing in the early stage due to proper rainfall across the region.

On the other hand, the national planting plan for upland rice is approximately 87 thousand hectares with the expected production around 180 thousand tons. Now, the progress of planting is approximately 79 % of the national plan under good conditions.

Malaysia

The accumulated planted of dry season rice covers around 80% of the cultivation areas and is scheduled to be completed end of this July. Whereas, harvest starts, and harvested area covers an approximately 6% of the cultivation areas. These cultivation areas are mostly carried out in granary areas. All in all, the overall condition of dry season rice is in fair to good condition.

Myanmar

Harvest of the dry season rice progressed until approximately 81% of total planted area (1.11 million hectares) with 899 thousand hectares accounting. It produced about 4.89 million tons of paddy, and the yield is 5.44 tons per hectare. It is a good yield and still higher than last year. Although some states could not harvest yet the dry season rice, the harvesting work is going well.

National plan for the planting area of wet season rice in this year is set at 6.07 million hectares. The planting of the wet season rice completed over 100 thousand hectares accounting 1.65% of the national plan. The monsoon rain started from this month in this year, but it seems not a big issue for the planting work.

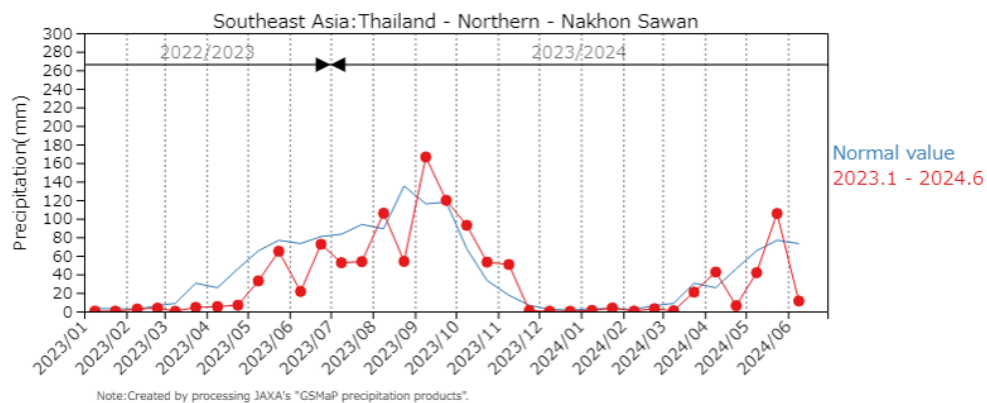
Philippines

Wet season rice planted in April to May is in tillering to young panicle initiation stage. Southwest monsoons and typhoon “Ewiniar” were the weather systems that affected the country during the month of May. In the areas directly affected by “Ewiniar”, above-normal rainfall was observed, causing floods that damaged 500 hectares of rice areas.

The current growing condition of wet season rice is a concern due to below-normal rainfall conditions in most parts of the country.

Thailand

Wet season rice is in the sowing and early tillering stage. The first half of 2024 has experienced less rainfall than usual. Farmers will reduce drought risk by decreasing of rice planting areas and changing their fields to cassava. Furthermore, some farmers plan to cultivate sugarcane due to high prices and subsidies by sugar factories. On the other hand, Thai Meteorological Department predicts rainfall amounts will be increased and distribution from this June. So, the yields are expected to increase than last year.



JASMAI Nakhon Sawan precipitation map: The first half of 2024 has experienced less rainfall than usual

Vietnam

In the North, the winter-spring rice (dry season rice) is in the harvesting stage with an area of 0.37 million hectares. The yield per harvested area is estimated at 6.34 tons, 0.6% higher than the last year due to favorable weather and enough irrigation water supply. In addition, the sowing of summer-autumn rice (wet season rice) starts.

In the South, the summer-autumn rice (wet season rice) is in the seeding and tillering stages. The current sown area has reached 1.1 million hectares. This summer-autumn rice planting progress is slower than last year mainly due to hot weather and lack of water by late rain.

*JASMAI is an open and free system

<https://jasmai.maff.go.jp/en/>